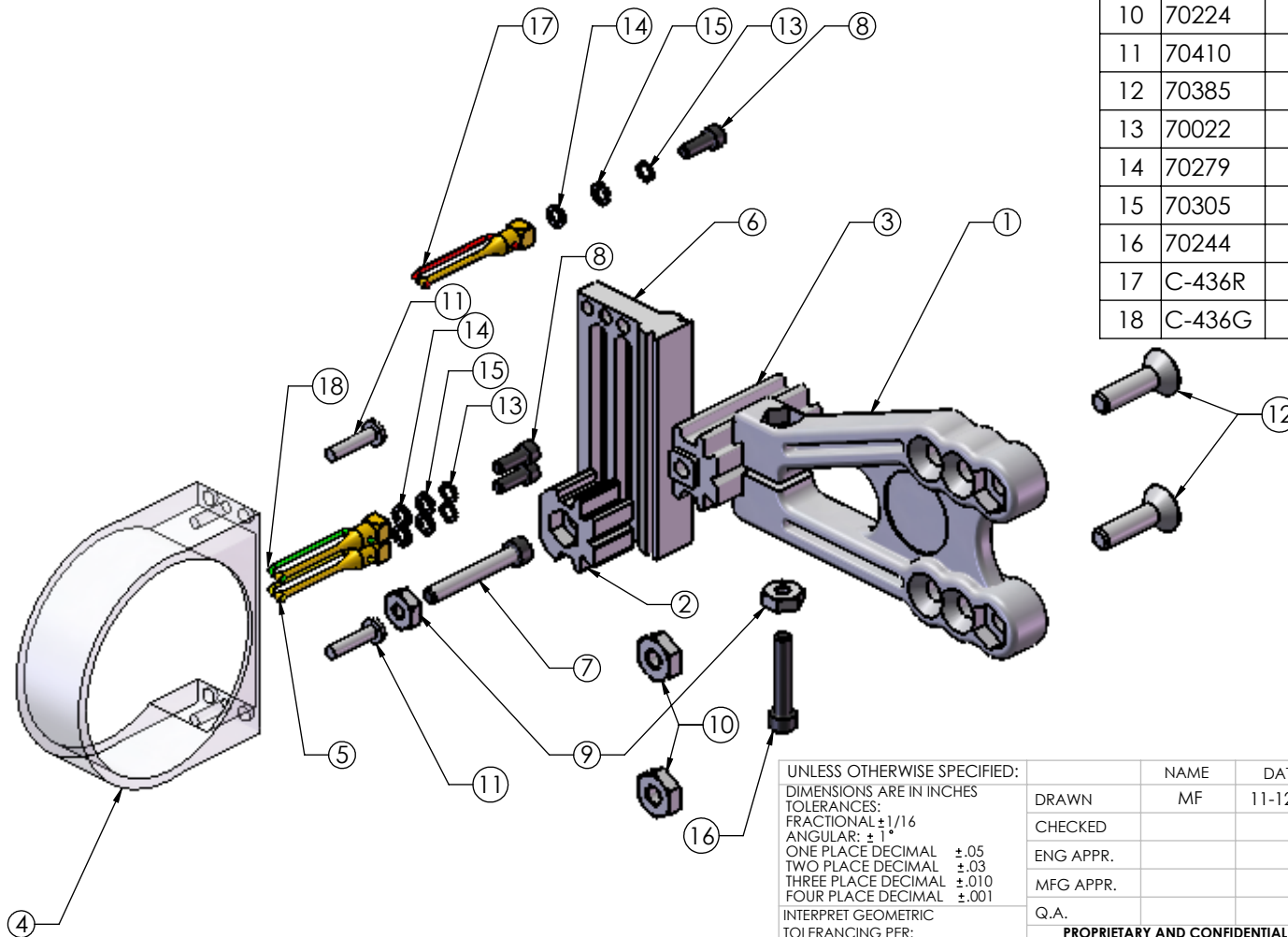


# TKO VERSION



ITEM NO.	PART NUMBER	DESCRIPTION	QTY
1	52114	EXTENSION, COMPOSITE, BANTAM	1
2	52138	CAP, WINDAGE, BANTAM	1
3	52139	SLIDE, WINDAGE, BANTAM	1
4	50875	GUARD, BANTAM, POLYCARB	1
5	C-436Y	PIN, TKO, YELLOW, ASSY	1
6	52117	BODY, TRACK, DUAL, COMPOSITE, BANTAM	1
7	70118	SHCS 6-32 X 1	1
8	70172	SHCS 4-40 X 5/16	3
9	70225	NUT, HEX, 6-32, BLK	2
10	70224	NUT, HEX, 10-24, BLK	2
11	70410	SCREW, #4, 1/2 LG, PLASTITE	2
12	70385	FHCS 10-24 X 3/4	2
13	70022	LW #4 Hi-Collar	3
14	70279	FW .187 x .125 x .031 Brass (Blk)	3
15	70305	WASHER, .188 X .125 X .030, PLASTIC	3
16	70244	SHCS 6-32 X 3/4	1
17	C-436R	PIN, TKO, RED, ASSY	1
18	C-436G	PIN, TKO, GREEN, ASSY	1

UNLESS OTHERWISE SPECIFIED:  
 DIMENSIONS ARE IN INCHES  
 TOLERANCES:  
 FRACTIONAL: ±1/16  
 ANGULAR: ±1°  
 ONE PLACE DECIMAL ±.05  
 TWO PLACE DECIMAL ±.03  
 THREE PLACE DECIMAL ±.010  
 FOUR PLACE DECIMAL ±.001  
 INTERPRET GEOMETRIC TOLERANCING PER:  
 MATERIAL

FINISH

DO NOT SCALE DRAWING

	NAME	DATE
DRAWN	MF	11-12-08
CHECKED		
ENG APPR.		
MFG APPR.		
Q.A.		

**PROPRIETARY AND CONFIDENTIAL**  
 THE INFORMATION CONTAINED IN THIS DRAWING IS THE SOLE PROPERTY OF COBRA ARCHERY. ANY REPRODUCTION IN PART OR AS A WHOLE WITHOUT THE WRITTEN PERMISSION OF COBRA ARCHERY IS PROHIBITED.

NOTE: DEBURR & BREAK ALL SHARP EDGES.  
 COBRA MANUFACTURING CO., INC  
 BIXBY, OKLAHOMA

TITLE:  
**SIGHT, BANTAM,  
 TRACK, DUAL, ASSY**

SIZE <b>A</b>	DWG. NO. <b>C-617</b>	REV <b>J</b>
------------------	--------------------------	-----------------

SCALE: 1:4 WEIGHT: 0.15 SHEET 1 OF 1